

APPENDIX A: SUPPORTING FIGURES

LIST OF FIGURES

Figure 1. Predicted FWP TN Concentrations at the end of 20 Days (Year 0 and 50 Conditions)	3
Figure 2. Predicted FWP TP Concentrations at the end of 20 Days (Year 0 and 50 Conditions)	4
Figure 3. Predicted FWP Salinity Concentrations at the end of 20 Days (Year 0 and 50 Conditions)	5
Figure 4. Conceptual Model of Algal Blooms as they occur in Seawater	6
Figure 5. Percent of River Water in Lake Maurepas at 20 Days	7
Figure 6. Past, Present and Future Projects in the Deltaic Plain	8
Figure 7. Proposed Pine Island Mitigation Site (Swamp restoration)	9
Figure 8. Proposed St. James Mitigation Site (Swamp restoration)	10
Figure 9. Proposed Boat Launch Relocation	11
Figure 10. Habitats found in the planning area	12
Figure 11. Scenic rivers found in the planning area.....	13

Figure 1. Predicted FWP TN Concentrations at the end of 20 Days (Year 0 and 50 Conditions)

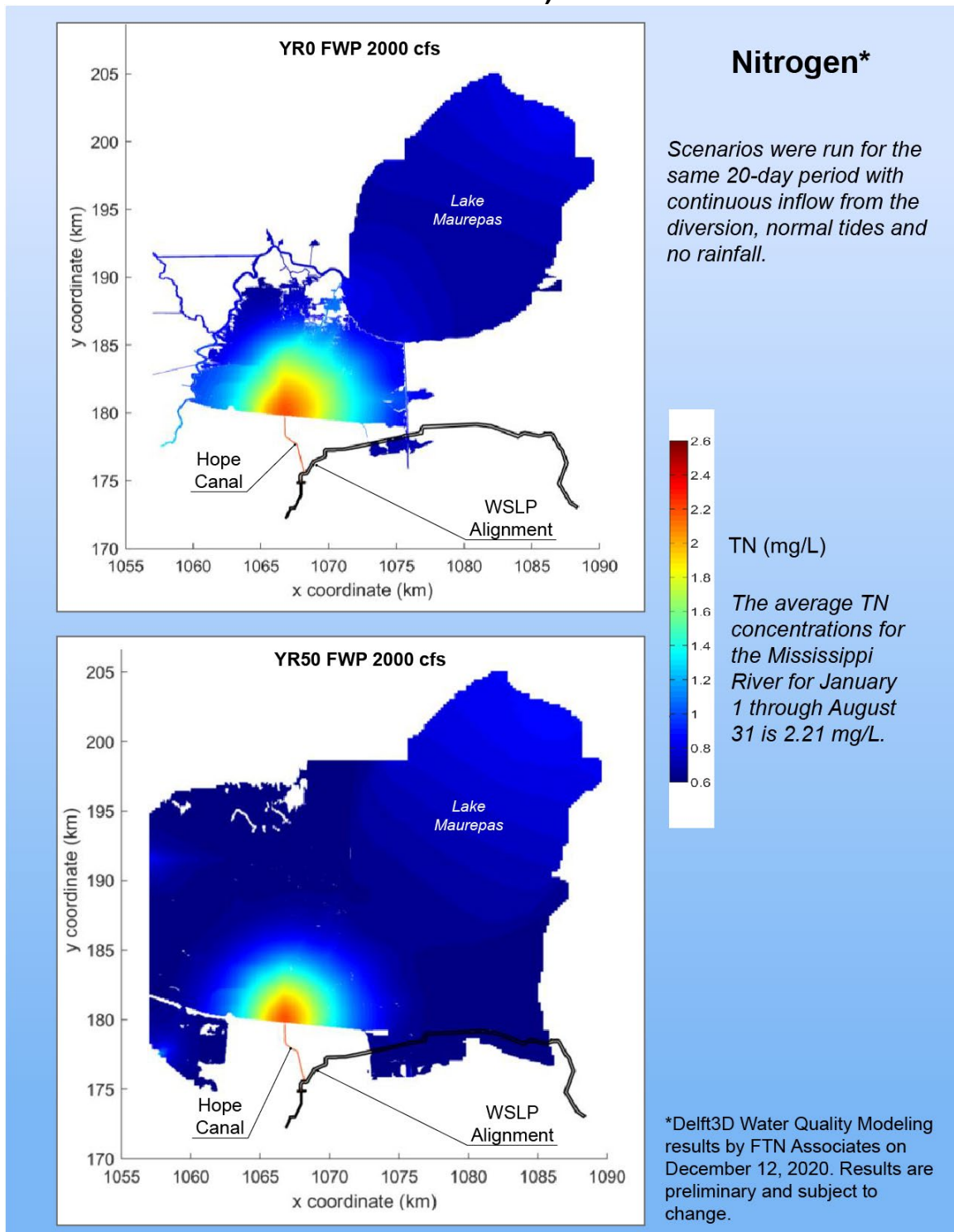
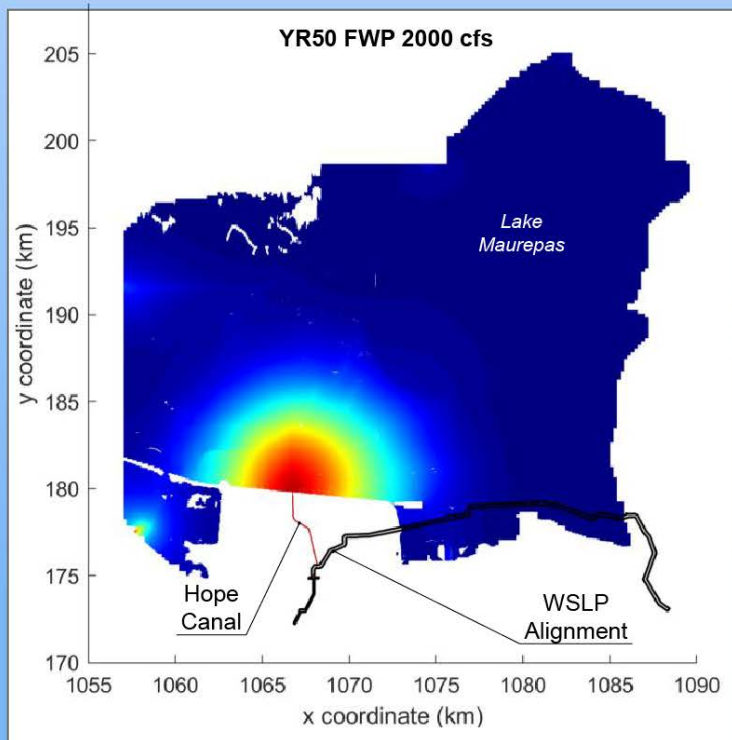
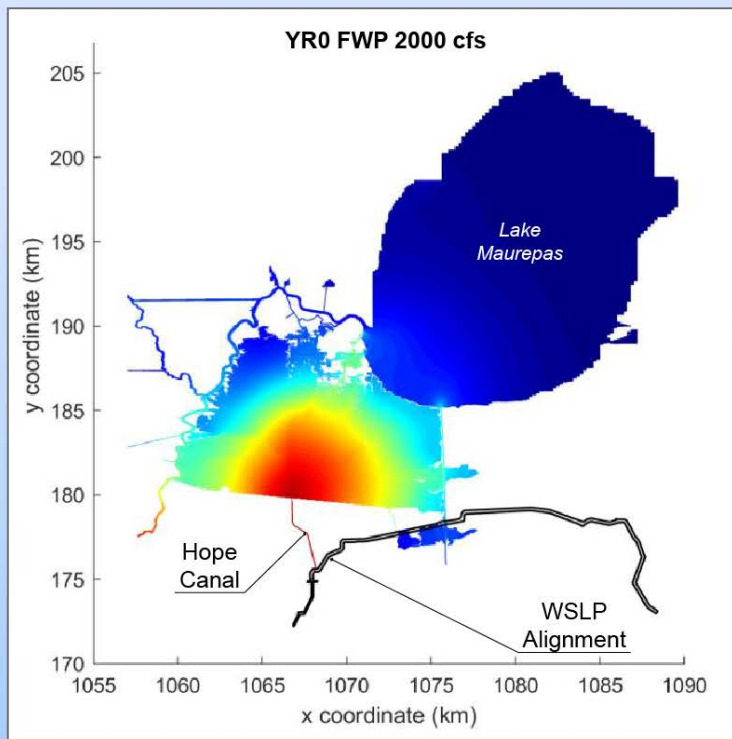
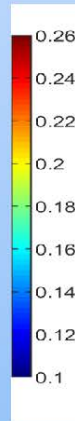


Figure 2. Predicted FWP TP Concentrations at the end of 20 Days (Year 0 and 50 Conditions)



Phosphorus*

Scenarios were run for the same 20-day period with continuous inflow from the diversion, normal tides and no rainfall.



TP (mg/L)

The average TP concentrations for the Mississippi River for January 1 through August 31 is 0.25 mg/L.

*Delft3D Water Quality Modeling results by FTN Associates on December 12, 2020. Results are preliminary and subject to change.

Figure 3. Predicted FWP Salinity Concentrations at the end of 20 Days (Year 0 and 50 Conditions)

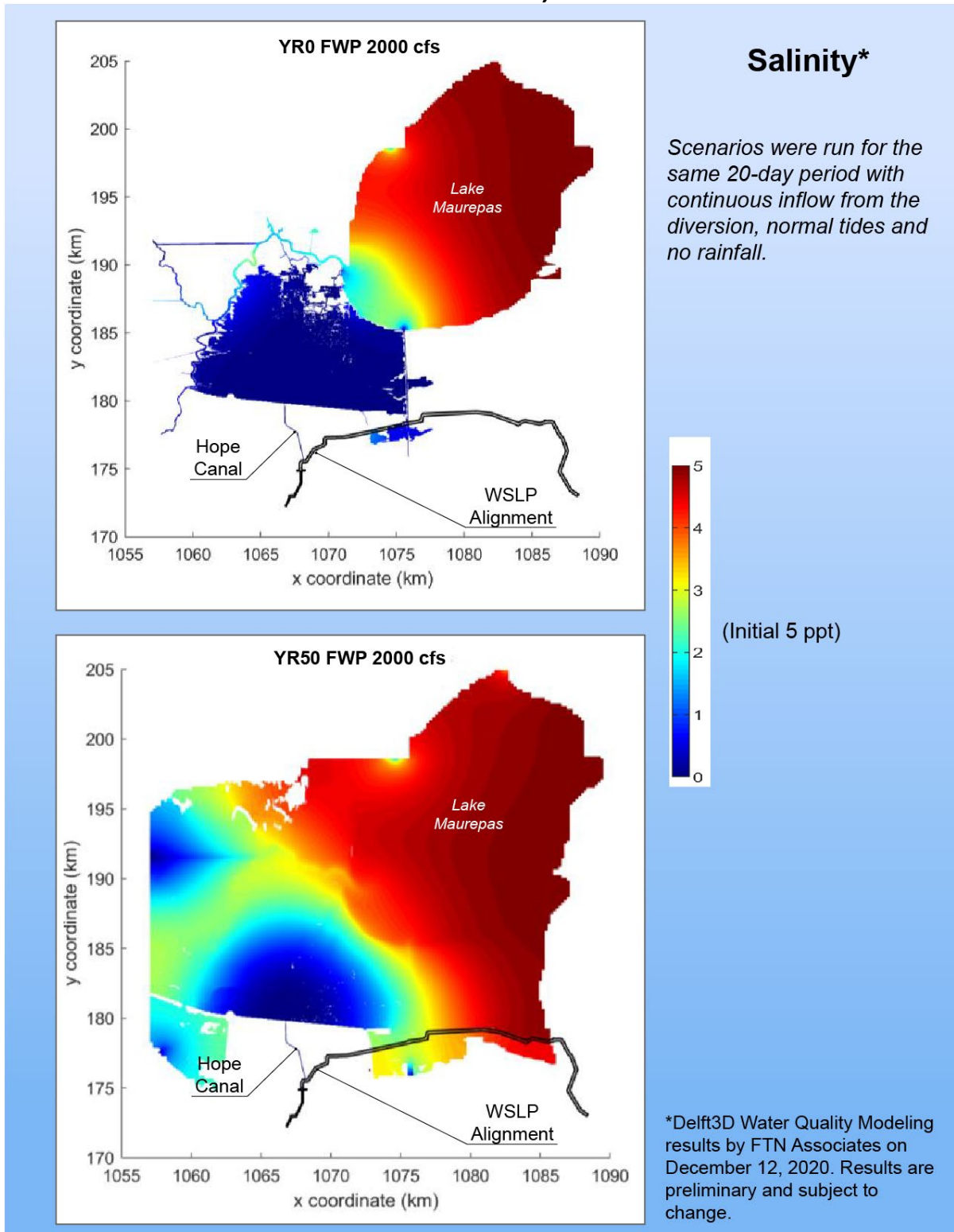


Figure 4. Conceptual Model of Algal Blooms as they occur in Seawater

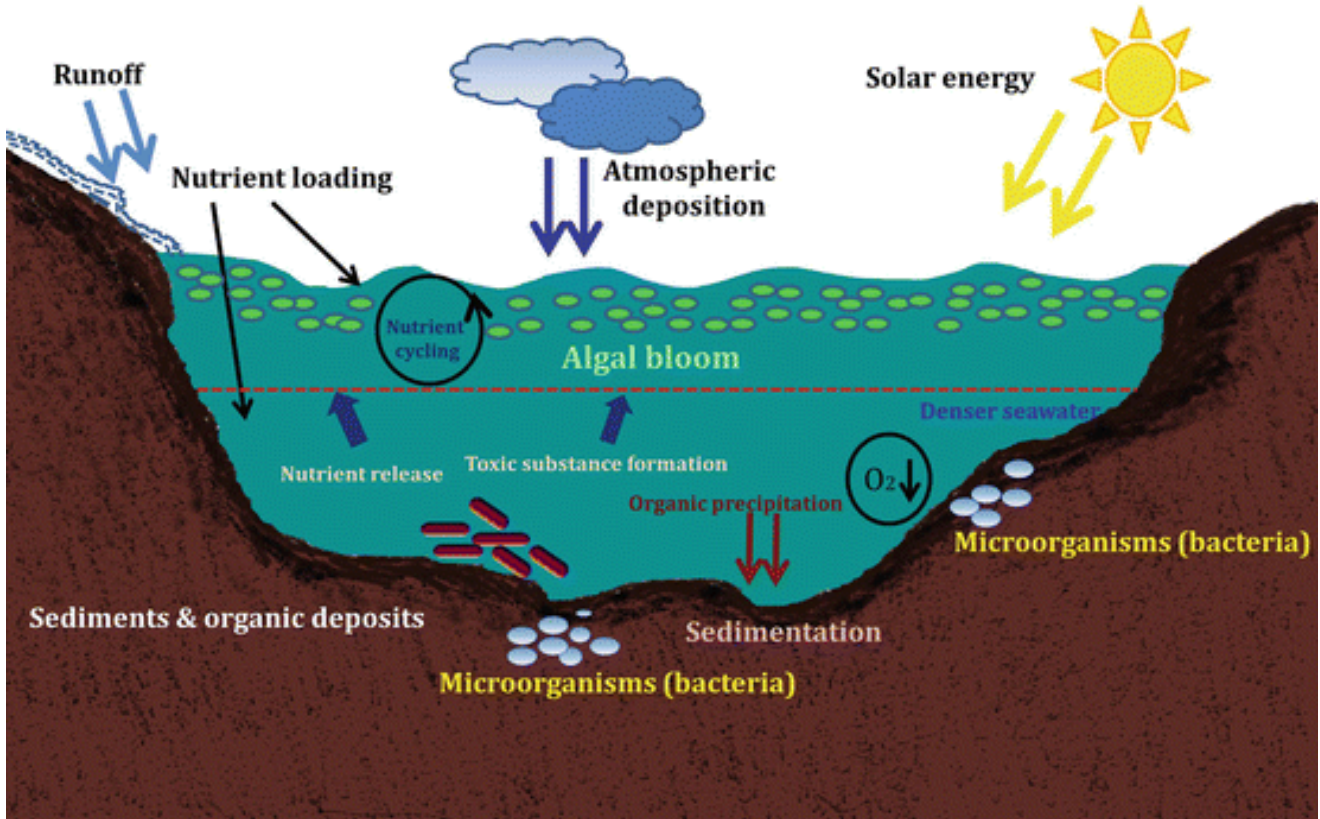


Figure 5. Percent of River Water in Lake Maurepas at 20 Days

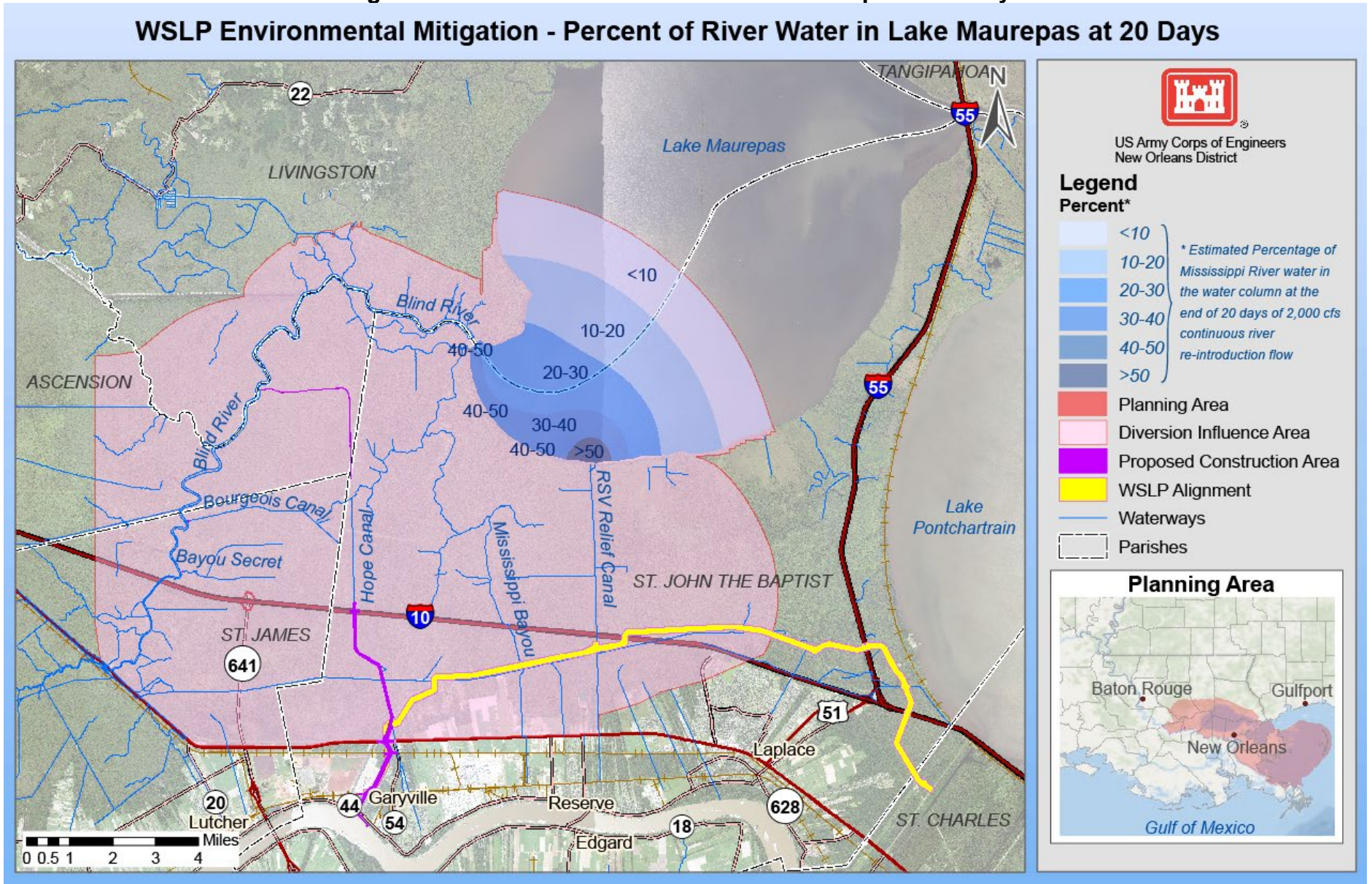


Figure 6. Past, Present and Future Projects in the Deltaic Plain

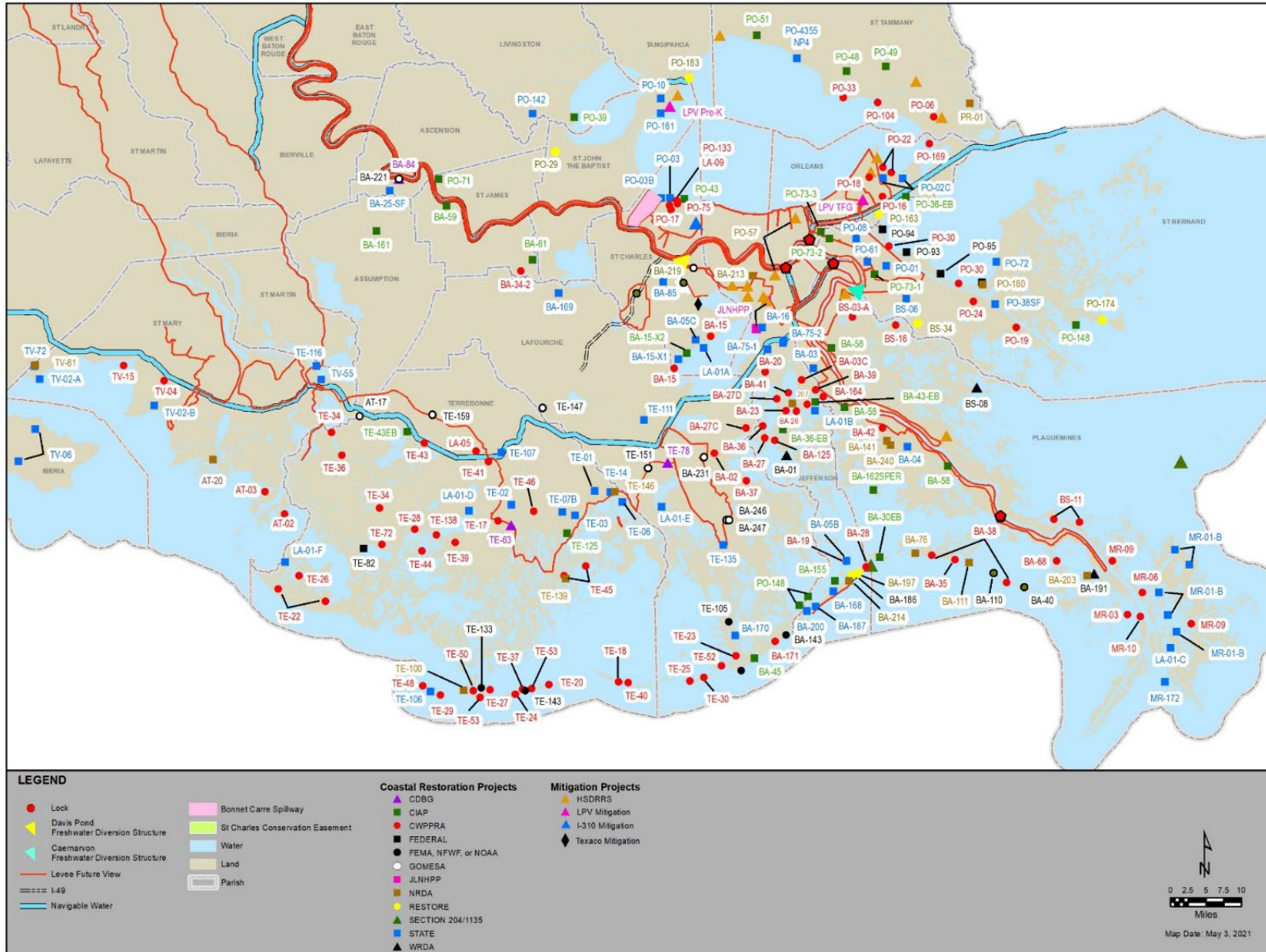


Figure 7. Proposed Pine Island Mitigation Site (Swamp restoration)

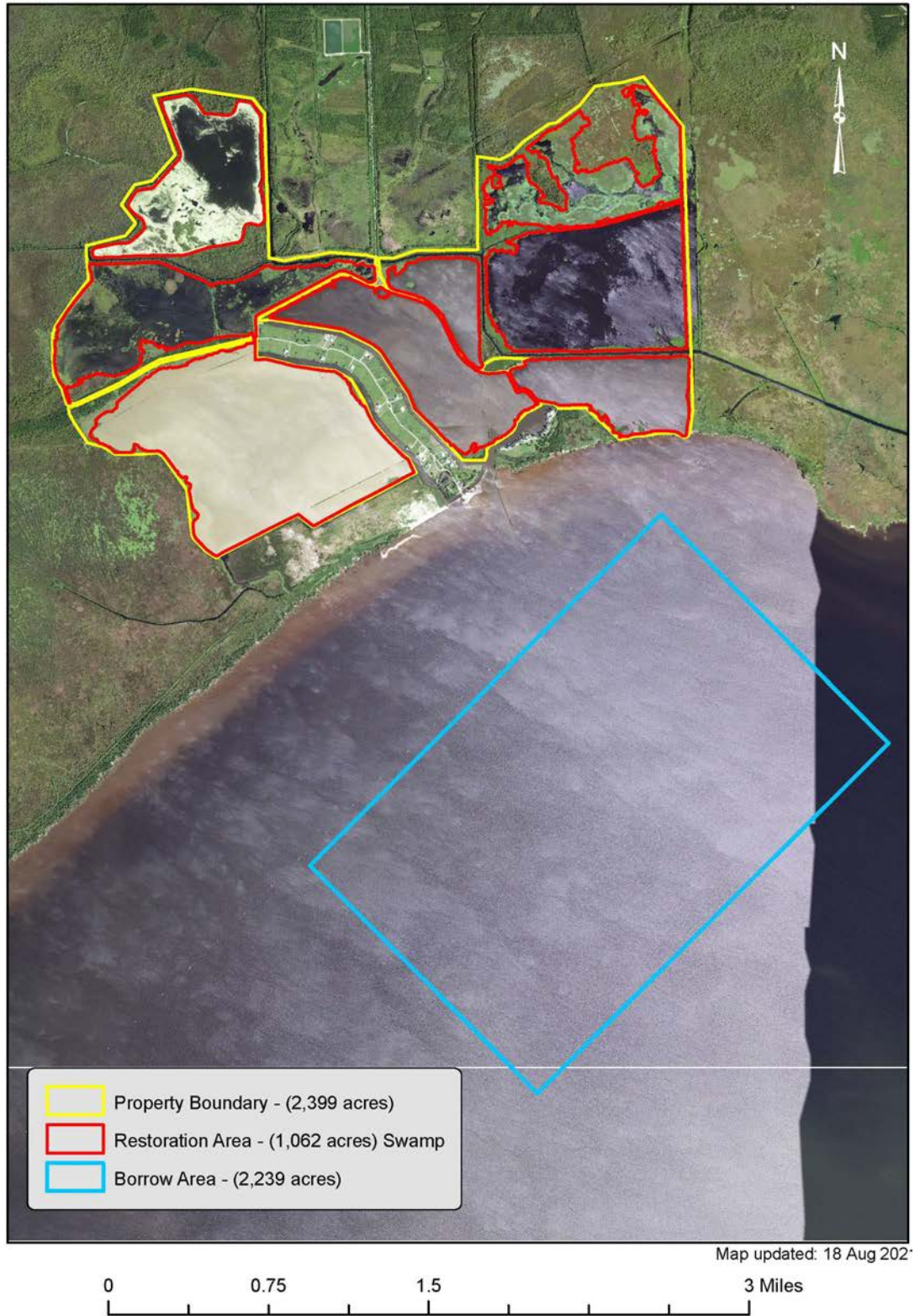


Figure 8. Proposed St. James Mitigation Site (Swamp restoration)

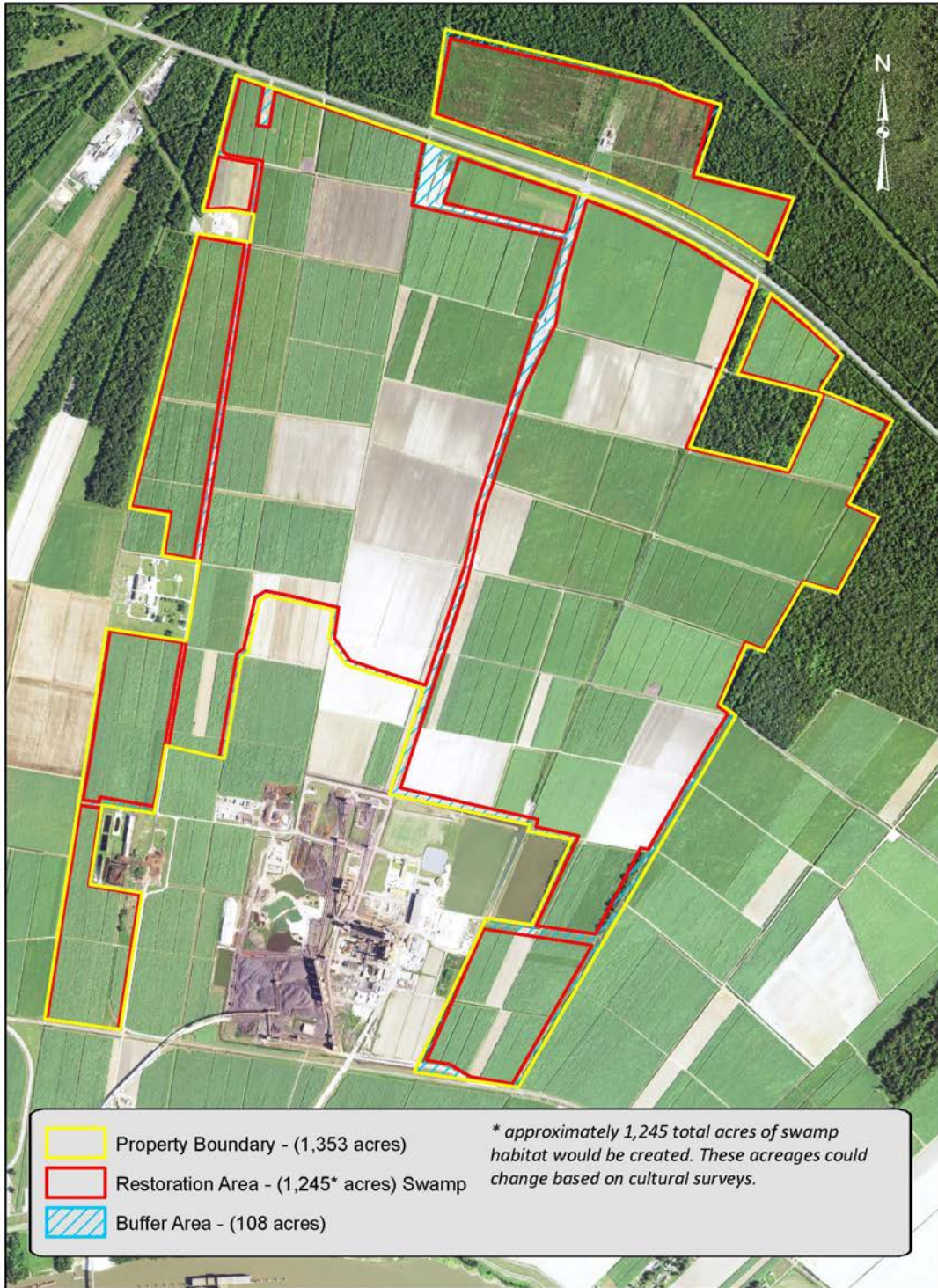
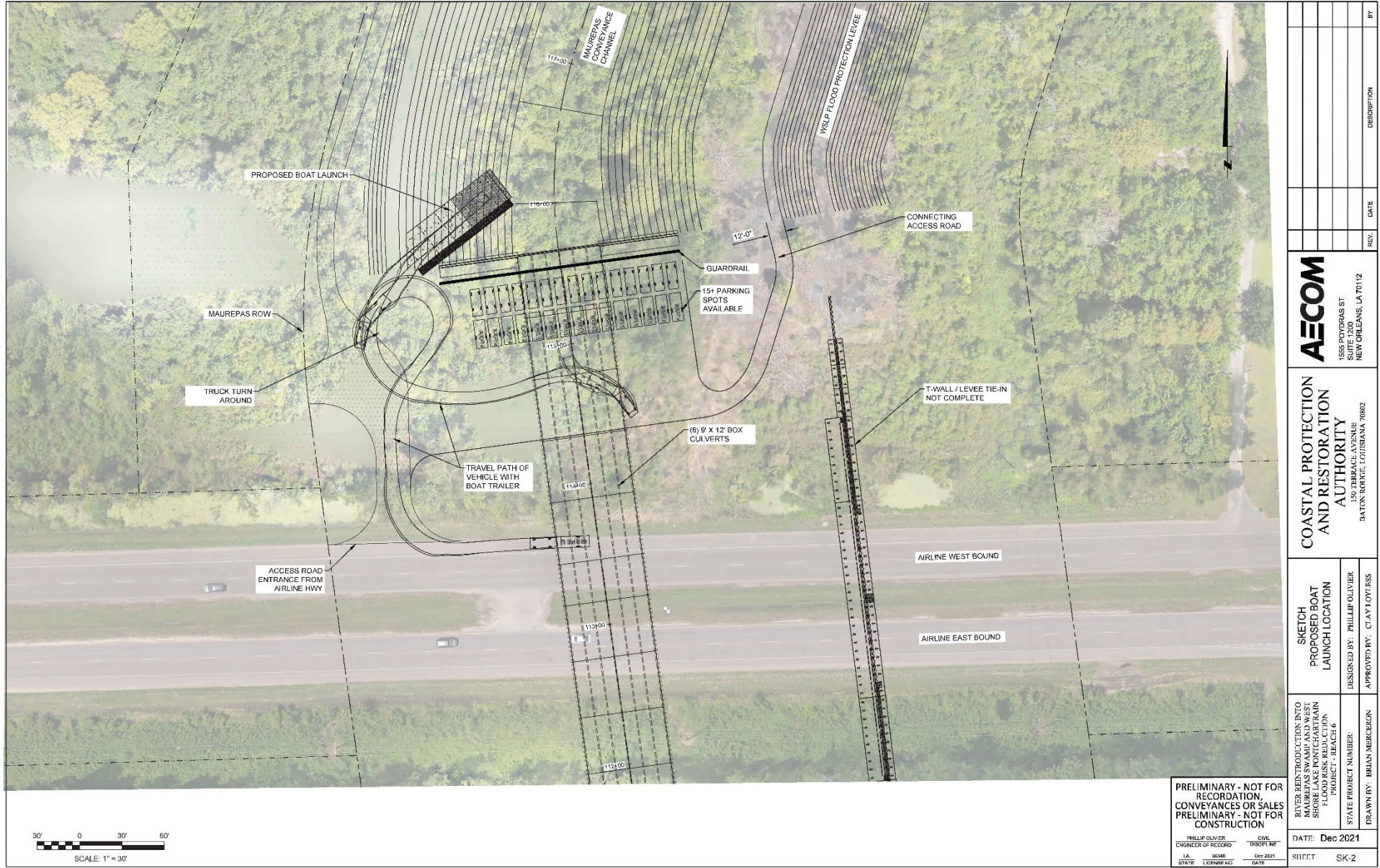


Figure 9. Proposed Boat Launch Relocation



REV.	DATE	DESCRIPTION	BY

AECOM
 1555 PONDCHARTRAIN ST
 SUITE 1200
 NEW ORLEANS, LA 70112

COASTAL PROTECTION AND RESTORATION AUTHORITY
 150 TERRACE AVENUE
 BATON ROUGE, LOUISIANA 70802

SKETCH PROPOSED BOAT LAUNCH LOCATION
 DESIGNED BY: PHILLIP OLIVIER
 APPROVED BY: CLAYTON FLESS

RIVER REINTRODUCTION INTO MAUREPAS SWAMP AND WEST SHORE LAKE PONTCHARTRAIN FLOOD RISK REDUCTION PROJECT - PHASE 6
 STATE PROJECT NUMBER:
 DRAWN BY: BRIAN MERCERSON

PRELIMINARY - NOT FOR RECORDATION, CONVEYANCES OR SALES
 PRELIMINARY - NOT FOR CONSTRUCTION

PHILLIP OLIVIER
 ENGINEER OF RECORD
 CIVIL
 LICENSE NO. 36346
 DATE: Dec 2021

DATE: Dec 2021
 SHEET SK-2

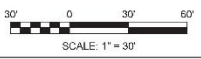
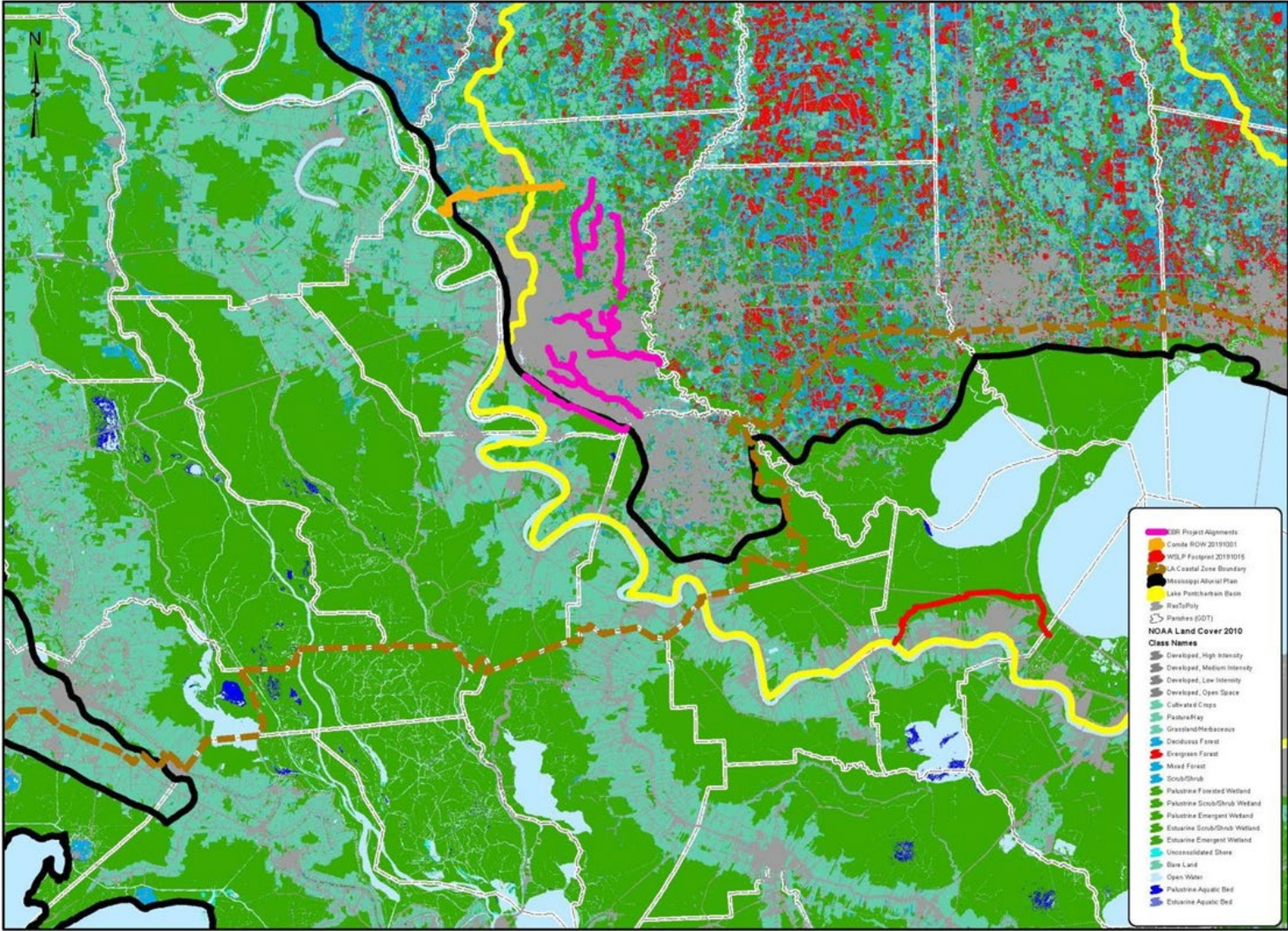


Figure 10. Habitats found in the planning area



Map Created: 22 Jan 2020

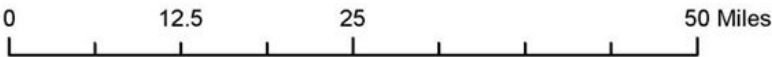
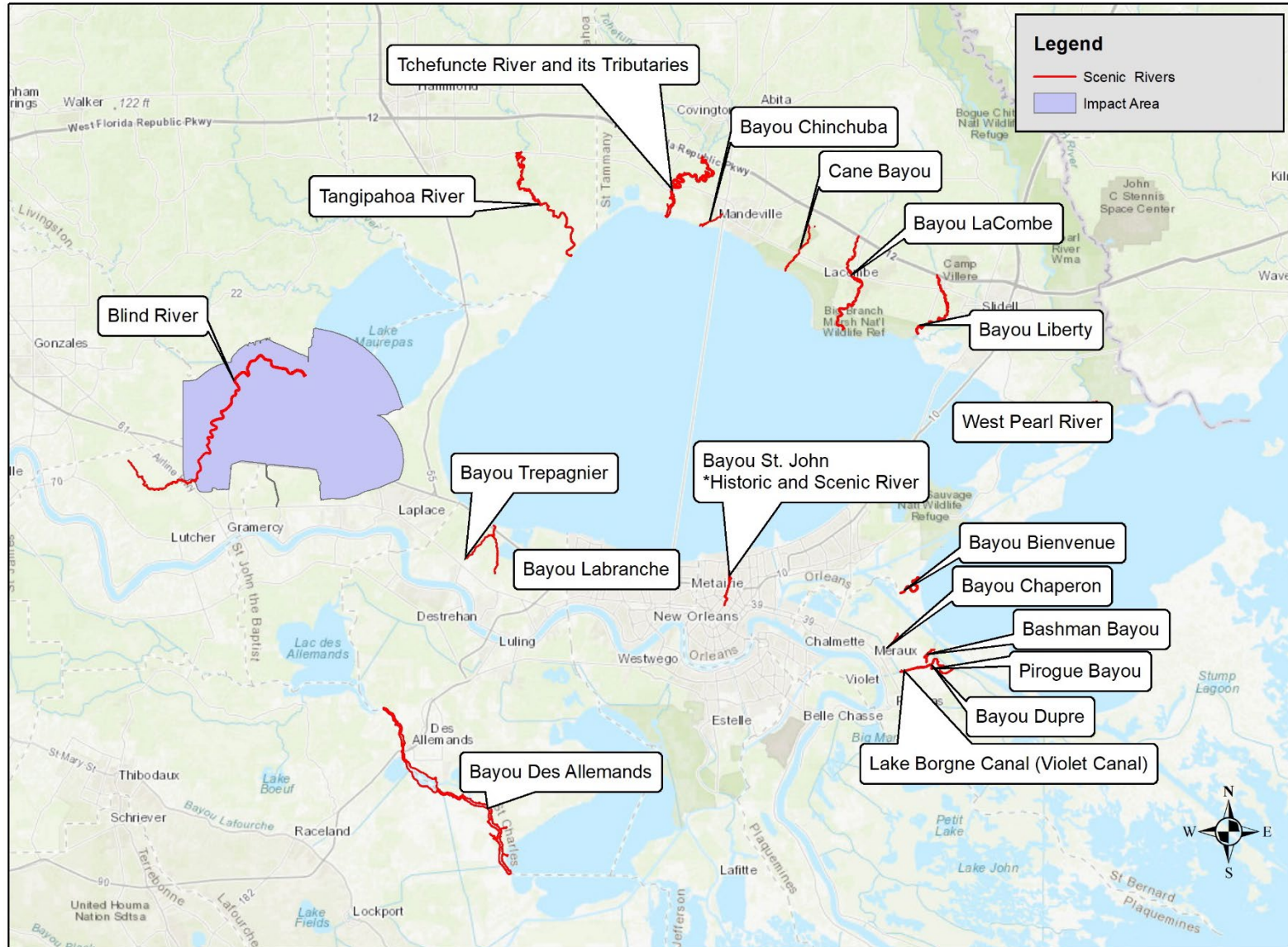


Figure 11. Scenic rivers found in the planning area



Service Layer Credits: Sources: Esri, HERE, Garmin, Intermap, increment P Corp., GEBCO, USGS, FAO, NPS, NRCAN, GeoBase, IGN, Kadaster NL, Ordnance Survey, Esri Japan, METI, Esri China (Hong Kong), (c) OpenStreetMap contributors, and the GIS User Community